

Trailerable Cruising Destinations in the Pacific North West

by Sandy & Debbie Williamson

Seattle Boat Show

2/8/2020 Tuesday 7:00 PM

Stage #1 Club Level

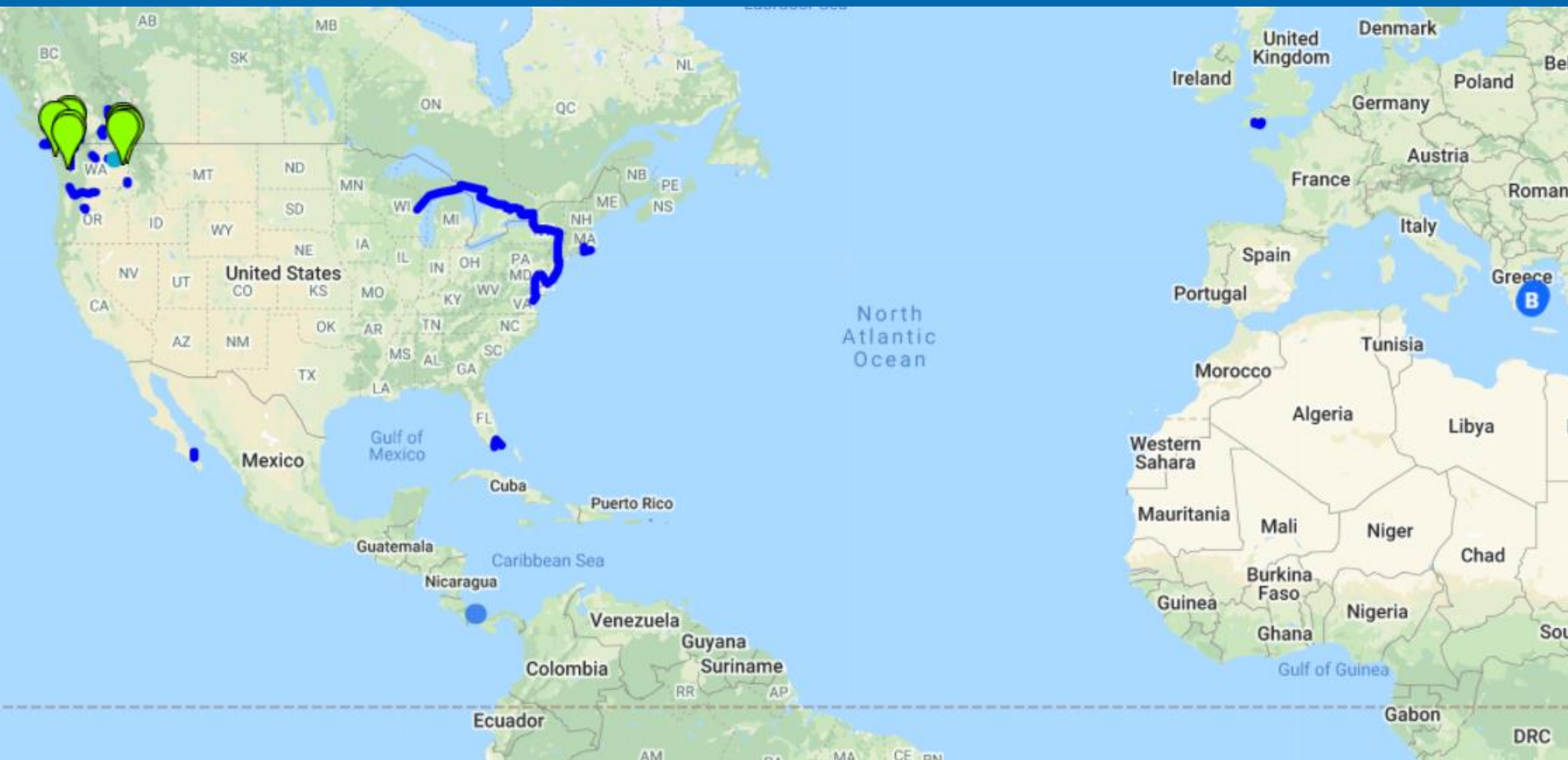
Your Boat Can Be Your Camper On The Road!



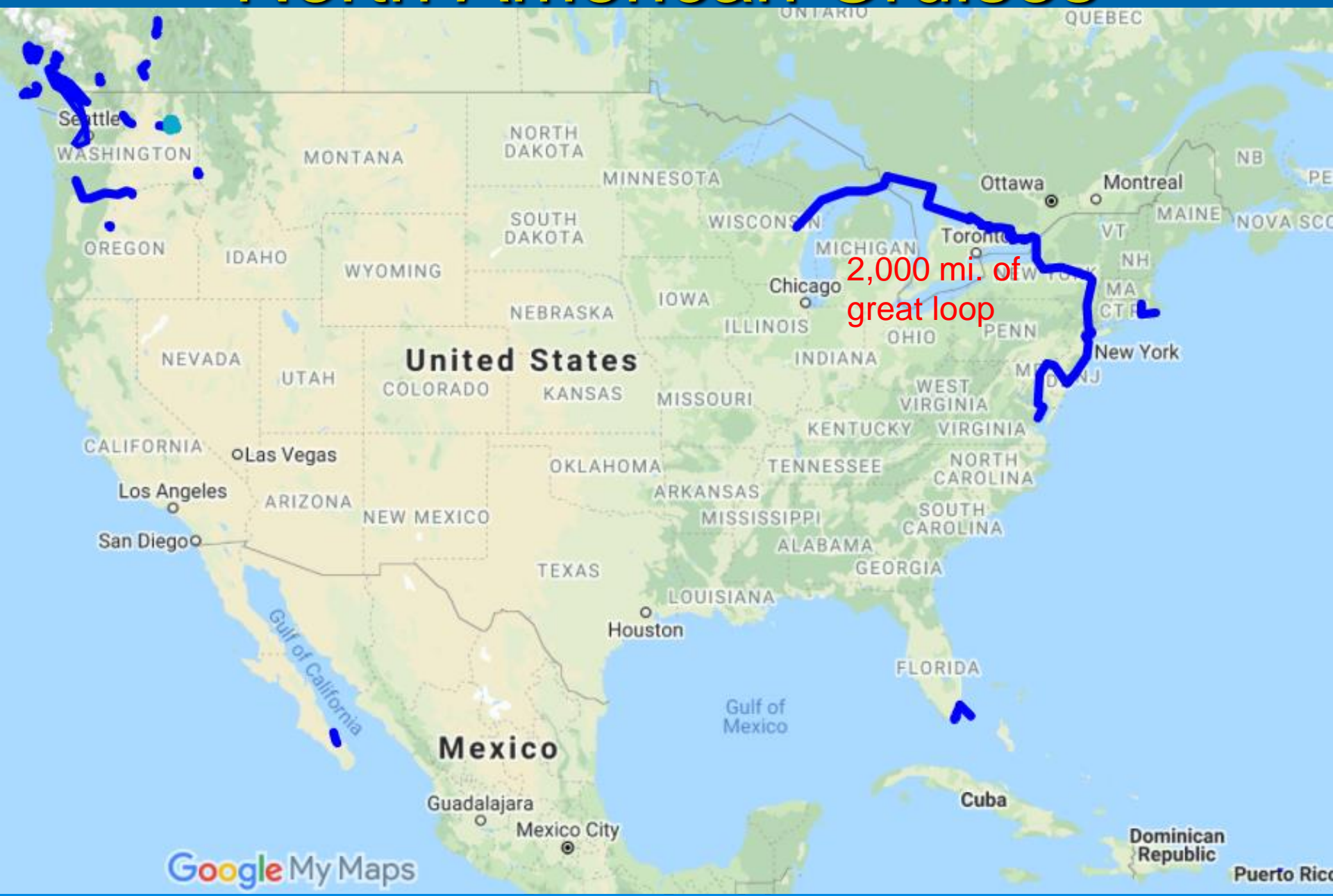
Debbie and My Background

- We've Owned 25 boats in last 49 years
- ½ power ½ sail, 12 Cruisers, all w/trailers
- Chartered 13 X -- Olympia to Desolation, Snake&Columbia R., BC, Lakes, SF Bay & Delta, Gulf, ICW, Great Loop, New England, Caribbean (BVI), Baja Mexico, English Channel, Greece, Panama
- Cruised over 5,000 miles, >365 Days
- Operated >150 boats in my business
- Teach Sailing-50 ton Captain-Trailerred 50K

Our worldwide cruising



North American Cruises



End:
Green
Bay, WI

Trent-Severn
trent-severn waterway

Erie Canal
erie canal

us
not
this
way

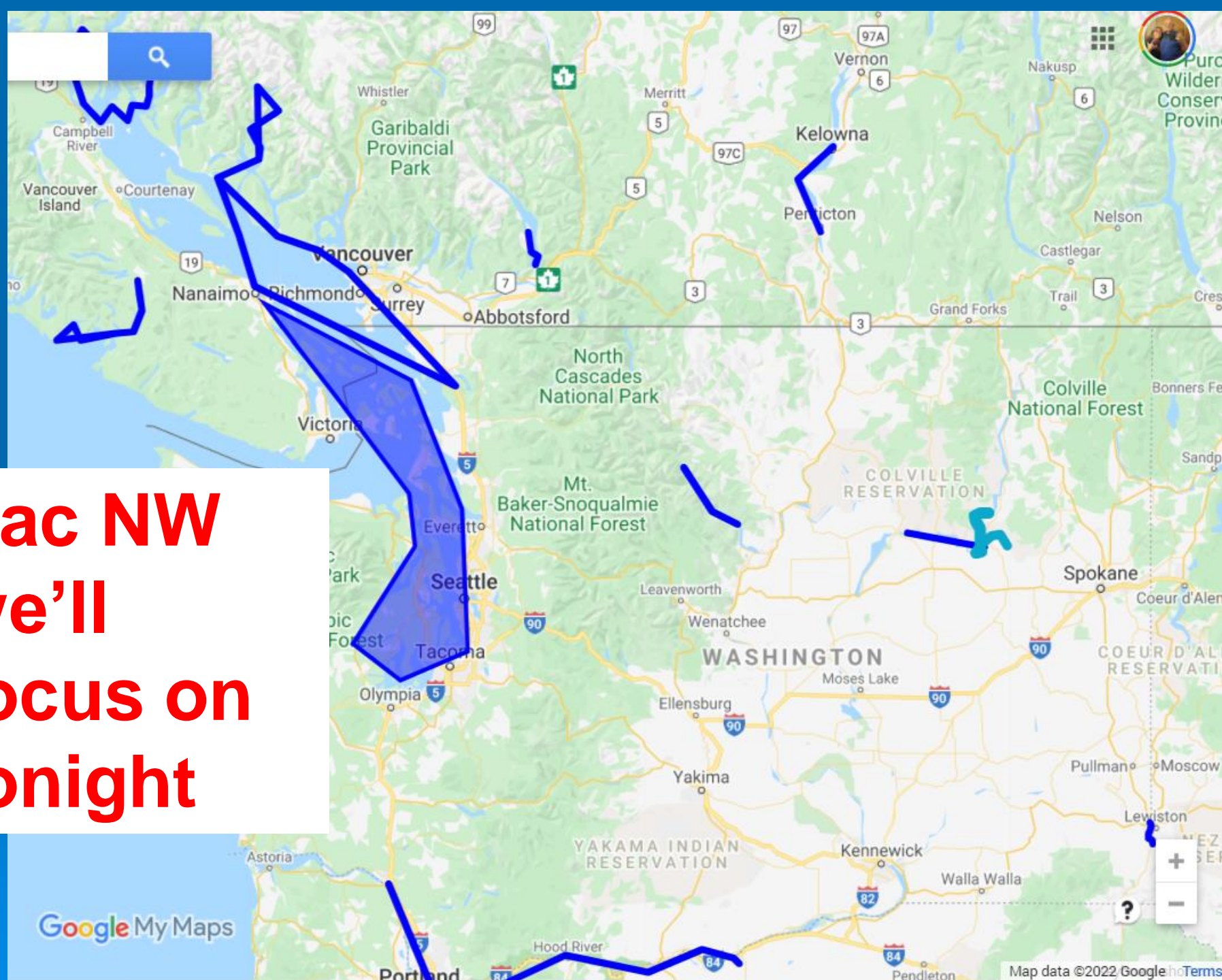
End

finish in chicago 4-7
weeks later

Our trip on the Great Loop

Start:
~WA
DC

**Pac NW
we'll
focus on
tonight**



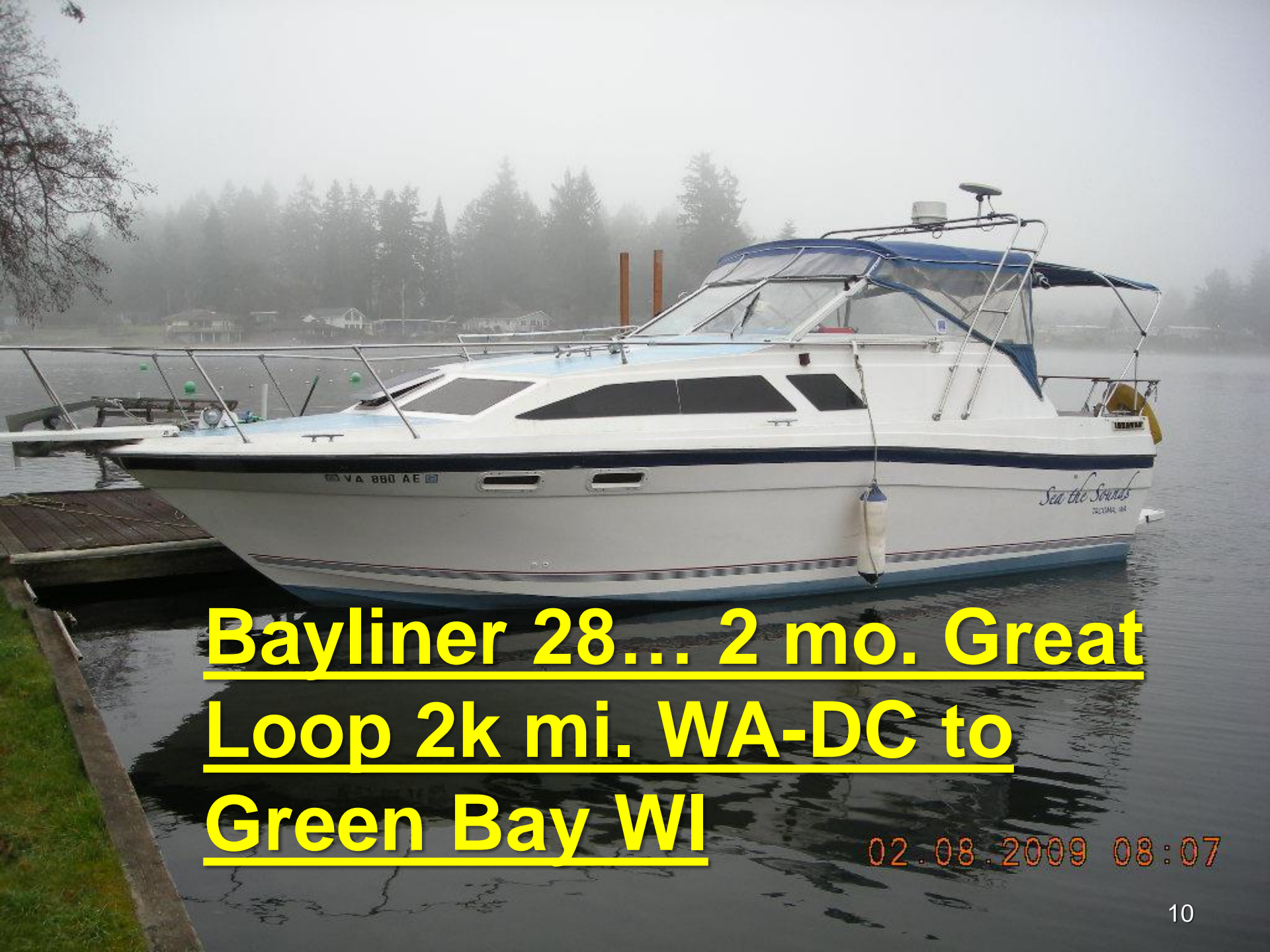
Pacific
Wilderness
Conservation
Province

Google My Maps

Map data ©2022 Google

Trailerable Boats Cruised-49 yrs

- Omega 14 Sail–5 days SJ Is. Slept ashore
- P-Cat 19 Sail – 3 days So. Sound & SJ Is.
- 18 ft. ski boat – slept @ BnB - Desolation
- Macregor 26X Sail 50 hp & Power 90 hp
- EcoCruiser Prototype–26ft pontoon w/cabin Shuswap, Puget, SJ Isl.
- Bayliner 28 Sunbridge – Great Loop 2k mi.
- Telstar 26 folding trimaran sail
- EcoCruiser–25ft pontoon w/ 2 cabins



Bayliner 28... 2 mo. Great
Loop 2k mi. WA-DC to
Green Bay WI

02.08.2009 08:07

7/6/07



3 depth sounders, 2 fuel flow indicators

5/14/07



The Boat – “Sea The Sounds”

- 1985 Bayliner 2850 - 10 ft beam, enclosed aft cabin, heat pump AC, radar, and windlass
- 5.7L [with duoprop outdrive 30% more efficient]
- Bought for \$6k, repowered for \$7k
- Bought a trailer in WI via eBay while on the trip.
- \$2500 to tow home via U-Ship [EBay for shipping]
- Sold for \$9k almost 2 years later
- Very comfortable for its size - 2 queen beds plus dinette for four. 3 depth, 2 GPS, 2 fuel flow



**MacGregor 26x
without mast
and 90 hp water
ballast is great
for powerboats
TOO!**

Telstar 26 folding Trimaran Sail





EcoCruiser 25 ft pontoon with 2 cabins, front w/ 6 ft headroom enclosed 6' head, island bed, galley on opposite side

5,000 # on trailer, 150hp 3-5 mpg on water



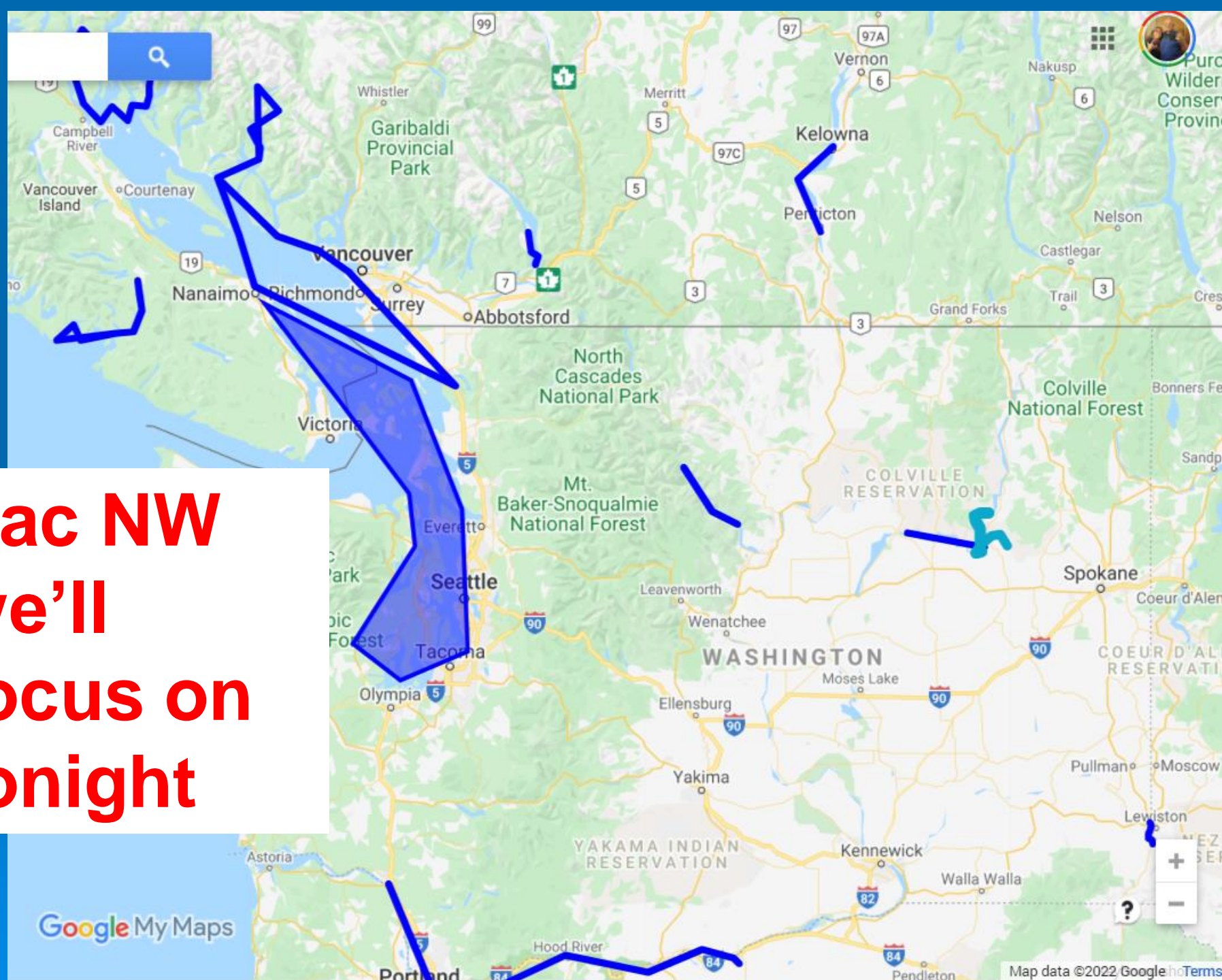
Pac NW places we've cruised

- All of Puget Sound, including south sound, San Juans, Gulf Islands, Sunshine Coast, Desolation Sound.
- Port of Allen Round Kitsap Peninsula 180 miles.
- Barclay Sound on West Vancouver Is.
- Harrison Lake BC—swam in lake in Isl. in lake.
- Shushwap Lake BC—natural 600 mi. shore
- Columbia R.: Lk Roosevelt & Kelso to Pasco

Pac NW places we've cruised 2

- Lake Okanogan BC Canada
- Upper Columbia R. Lake Roosevelt – >100 miles
- Snake R. below Hells Canyon
- Lake Chelan - 55 miles long
- Lower Columbia R. Longview to almost Pasco / Tri-cities – ... still bucket list: Longview to mouth.
- Lake Billy Chinook / Cove Palisades OR

**Pac NW
we'll
focus on
tonight**



Barclay Sound West Vancouver Is. Bamfield







— 1920 Wickham Net Shed —
Built to store equipment by union fishermen, Eric Wickham and his family. It was originally fronted by a huge dock for mending and drying nets.



1923 Federal Building
Built to replace the Customs House, Post Office, railroad, families and more. Office, railroad families and more. Office, railroad families and more. Office, railroad families and more.



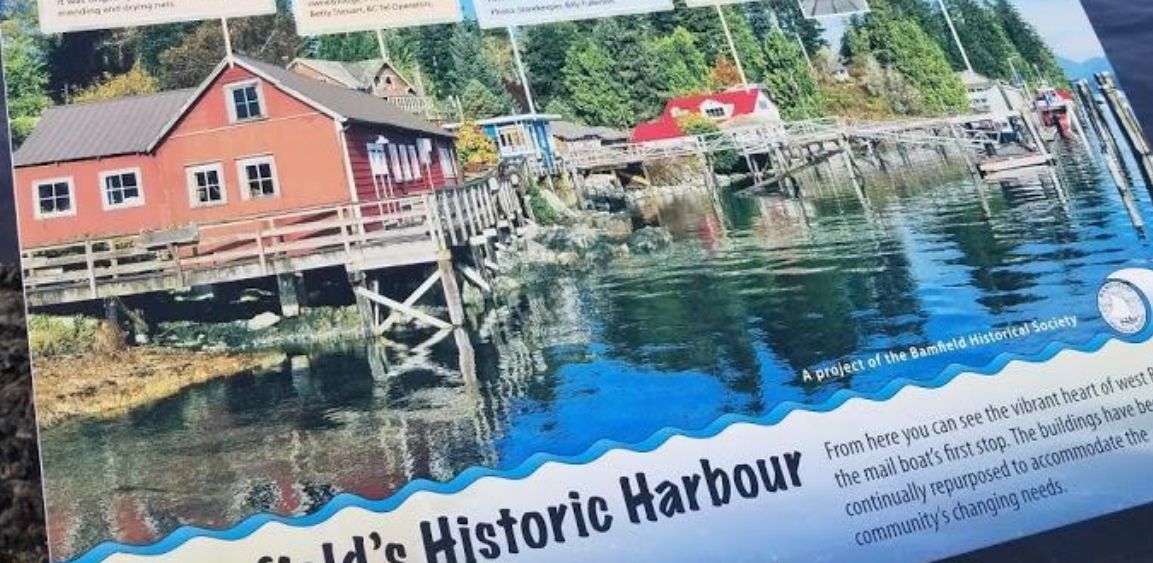
1924 Bamfield General Store
Eric and Charles Wickham named a General Store. Charles Wickham named a General Store. Charles Wickham named a General Store.



— 1907 Lifeboat Station —
Built to protect the lifeboat and rigging. Built to protect the lifeboat and rigging. Built to protect the lifeboat and rigging.



— 1923 Jennings Store —
Built to replace the old store. Built to replace the old store. Built to replace the old store.



Bamfield's Historic Harbour

From here you can see the vibrant heart of west Bamfield, the mail boat's first stop. The buildings have been continually repurposed to accommodate the community's changing needs.

A project of the Bamfield Historical Society











Eagle Nook Resort



**My lovely wife
at Ucuelet, BC,
W. Vancouver
Is. -
Great Natural
water
aquarium**





150 Year Old Shipwreck



2 + 2 Cruising Option

- 2 couples in a trailerable cruising boat that sleeps 2 adults comfortably.
- Room for 4 in the daytime. So rent a cabin at night for the guest couple: Barclay, Desolation, San Juans, Col. R., Shushwap, Round Kitsap
- STAR cruising: Central cabin going out a different direction every day: Lopez Is.

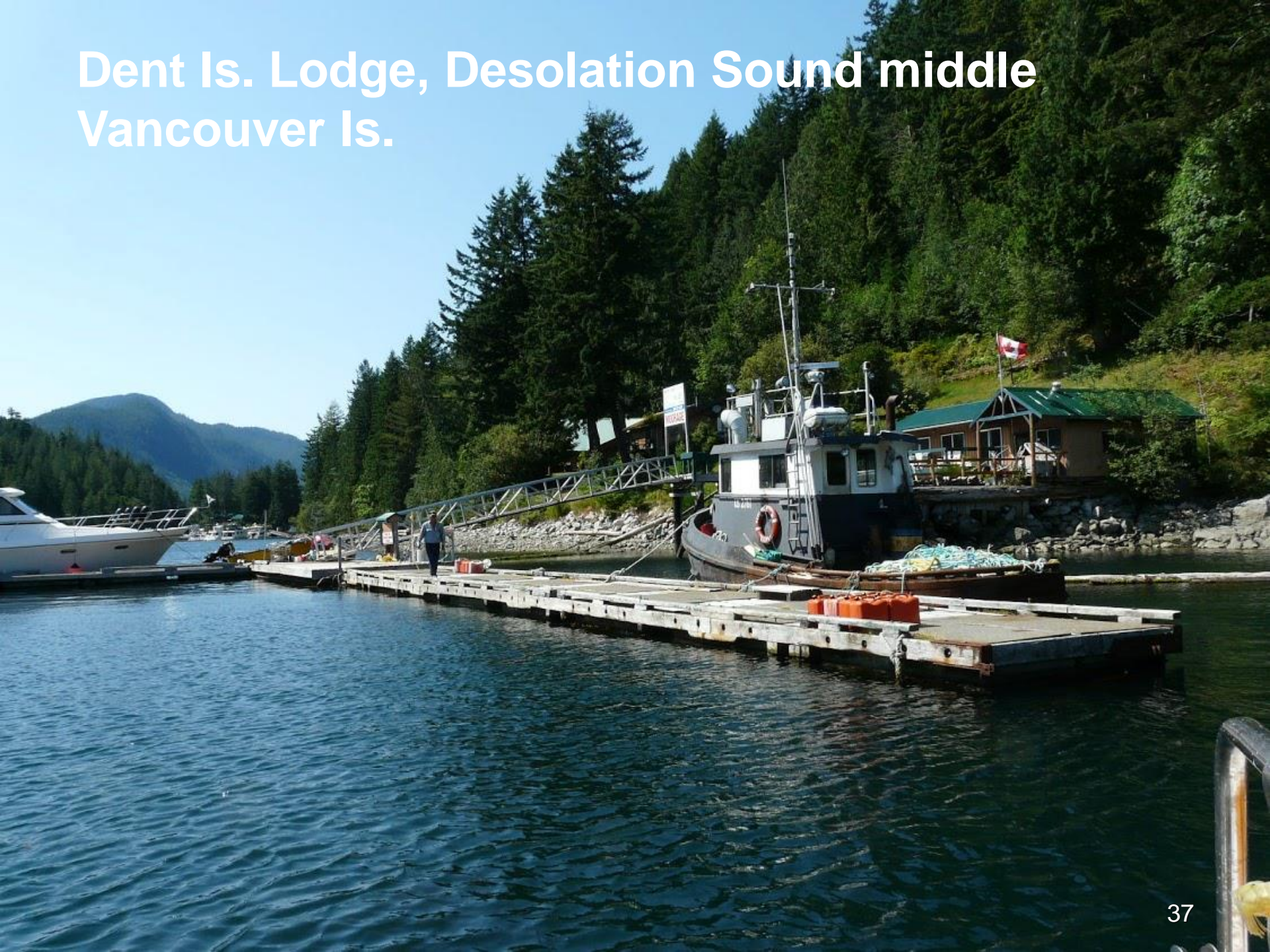
Campbell River, Desolation Sound Middle Vancouver Is.



Blind Bay, Desolation Sound middle Vancouver Is. From a great forest trail



Dent Is. Lodge, Desolation Sound middle Vancouver Is.





Harrison Lake BC –
swam in a lake **IN** a
Island in a lake.







Shushwap Lake BC— natural 600 mi. shore

*Easy to Find... Easy to Love...
Hard to Leave!*



Photo by T.J. Thompson

Shushwap On Canvas

Shushwap Lake BC— natural 600 mi. shoreline Floating store/cafe



Shuswap Lake

WEST to Vancouver
via Kamloops
4.5 HRS drive time



Book your vacation today!
1.800.663.4026

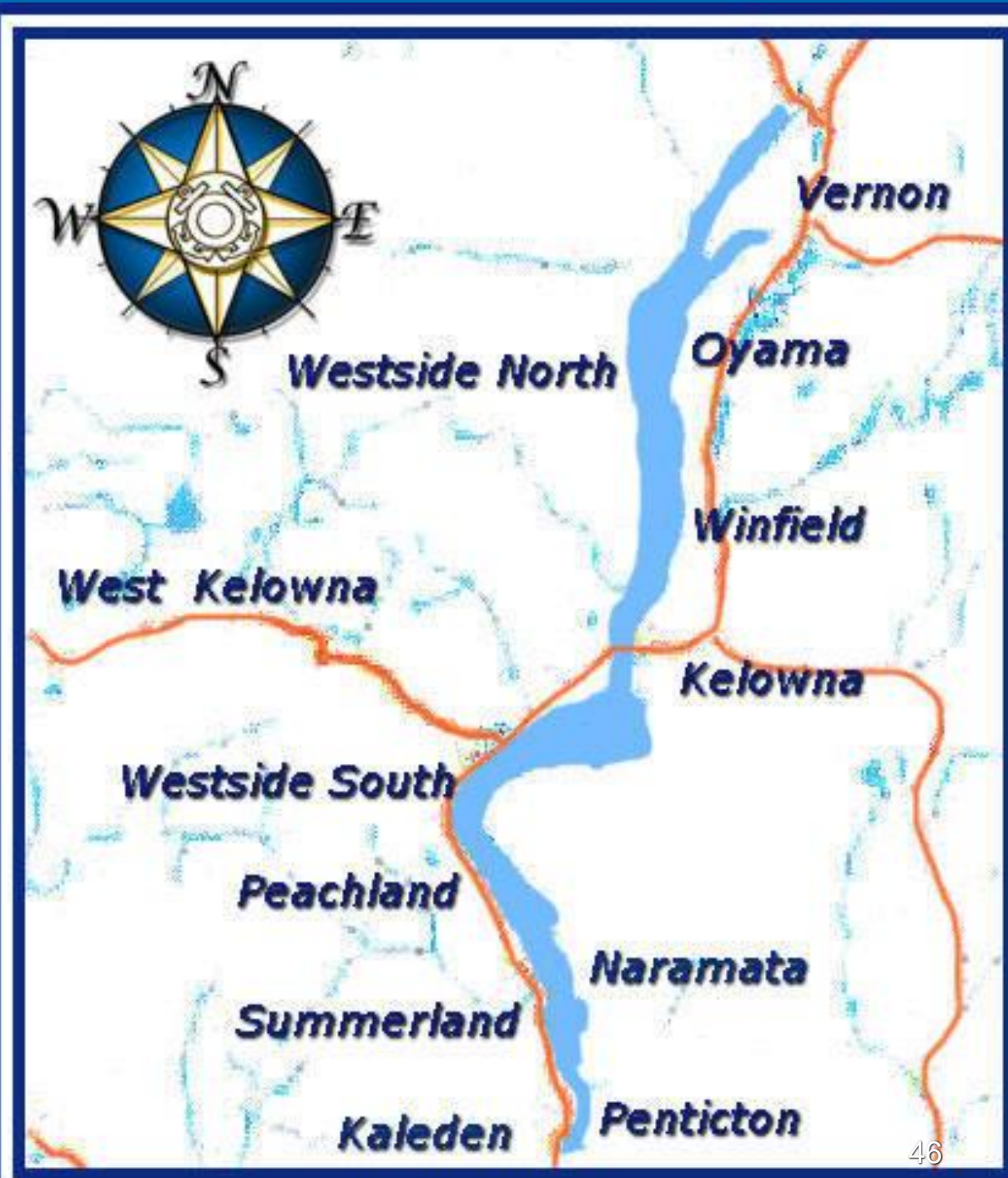
THE SHUSWAP TRAIL

If you would like detailed trail information for biking, or hiking trails accessible from the shores of Shuswap Lake, visit www.shuswaptrails.com

Detailed guides are also available at the region's Visitor Info Centres in Salmon Arm and Sicamous.

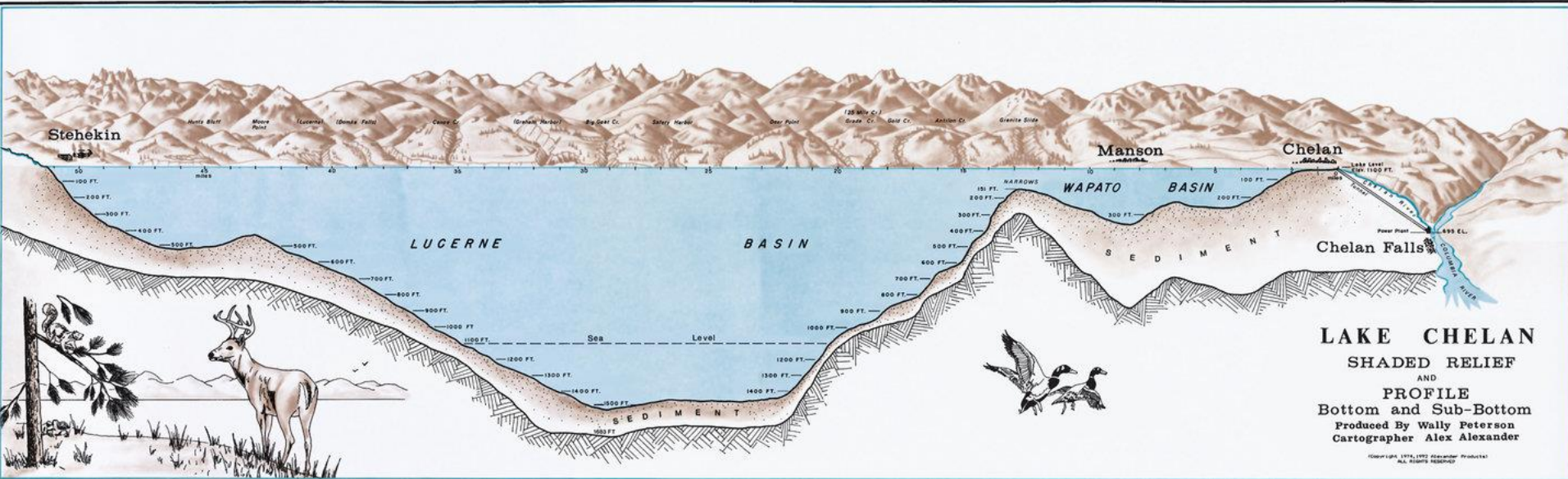
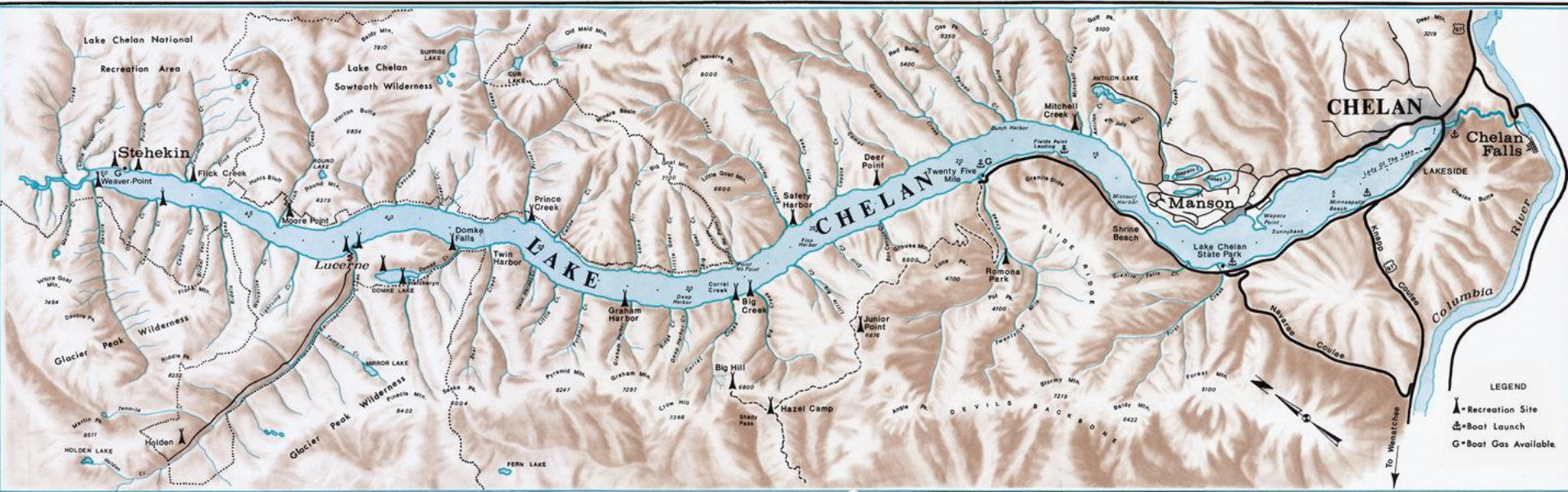


Lake Okanogan, BC

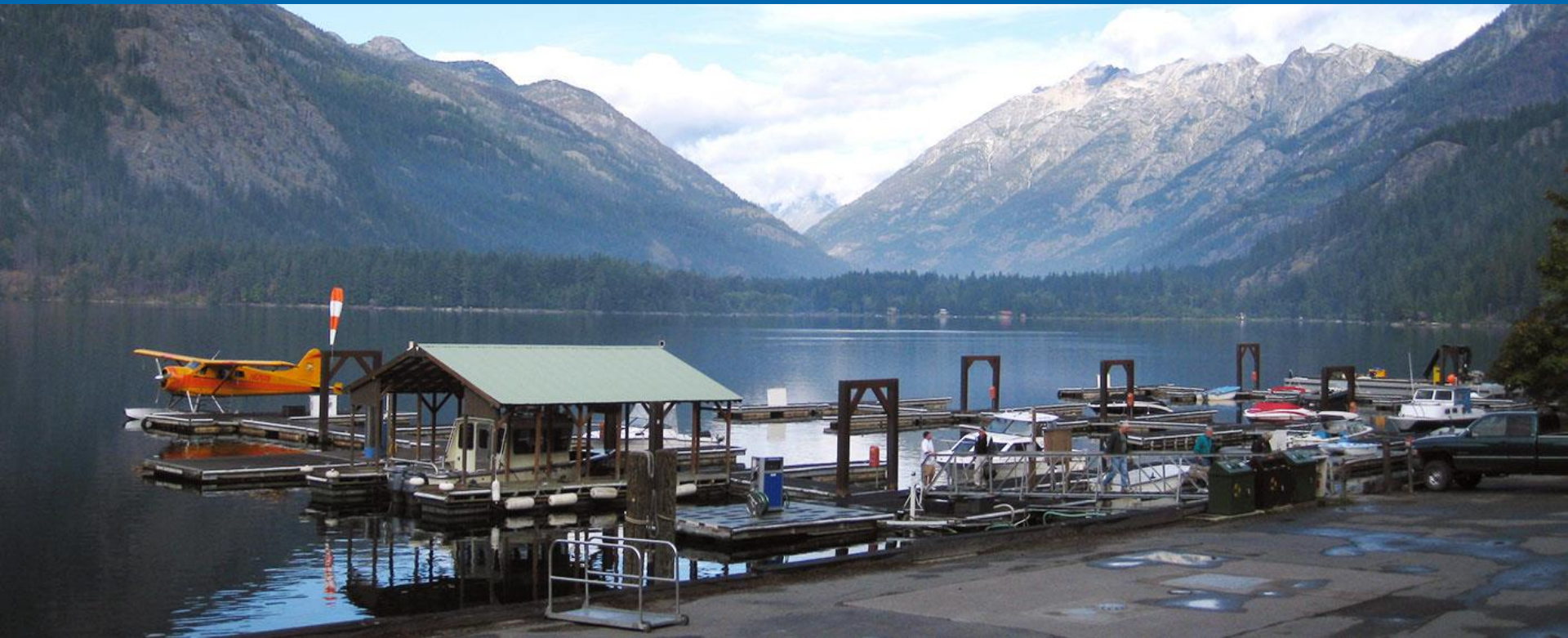


Kelowna, BC



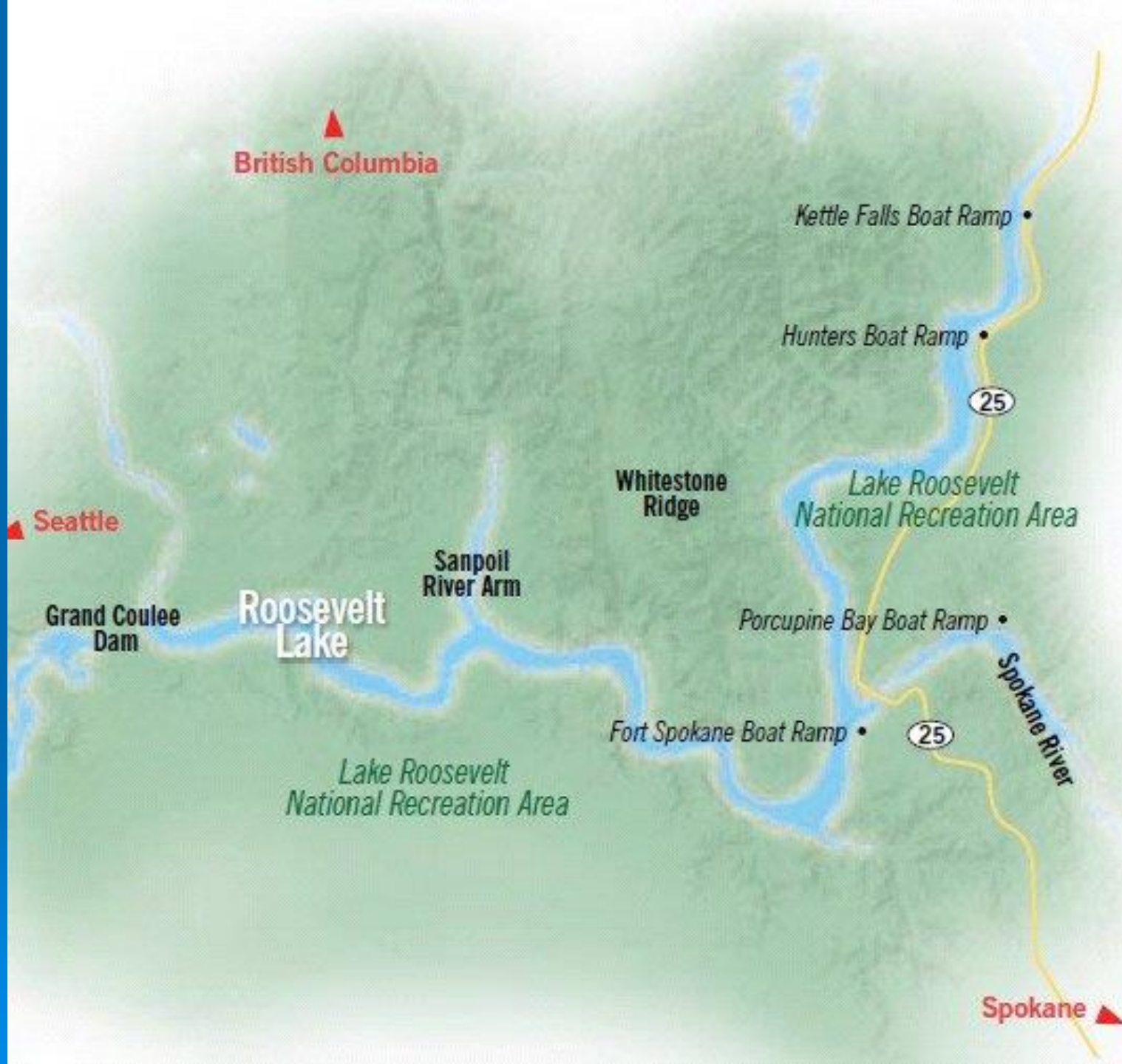



Lake Chelan, Stehekin 55 miles from Chelan





Columbia R. above Coulee dam 150 miles. N. Shore is tribal and uninhabited. Upper part forested. Lake Roosevelt



A black bear is seen on a sandy shore, partially obscured by green bushes. The bear is facing away from the camera, and its dark fur contrasts with the lighter sand. In the foreground, there is a large piece of weathered driftwood lying on the sand. The background shows more dense vegetation and a clear sky.

Columbia R. near Spokane R. N. Shore is tribal and uninhabited. Bears on the shore ... and wild horses [We saw 9 horses]



Nova Houseboat at
Grand Coulee Canyon

Steamboat Rock on 30 mile Banks lake near Grand Coulee Dam



Banks Lake Jumping rocks w Grandkids – favorite thing



Columbia Gorge up from Portland





**Beacon Rock Park— 800
ft. great spiral hike &
View above Portland
below Bonneville.**



**Bonneville Dam Lock
Takes you up 90 ft -
FREE**





**1/2 scale replica of Stonehenge near
Maryhill on Col. R. towards Tri-Cities**

Cove Palisades Park, Lake Billy Chinook No. Central OR



Cove Palisades Park, OR Lake Billy Chinook





Jarrells Cove, South Puget Sound



Jarrells Cove, South Puget Sound

Hood Canal [though natural], west side of Kitsap



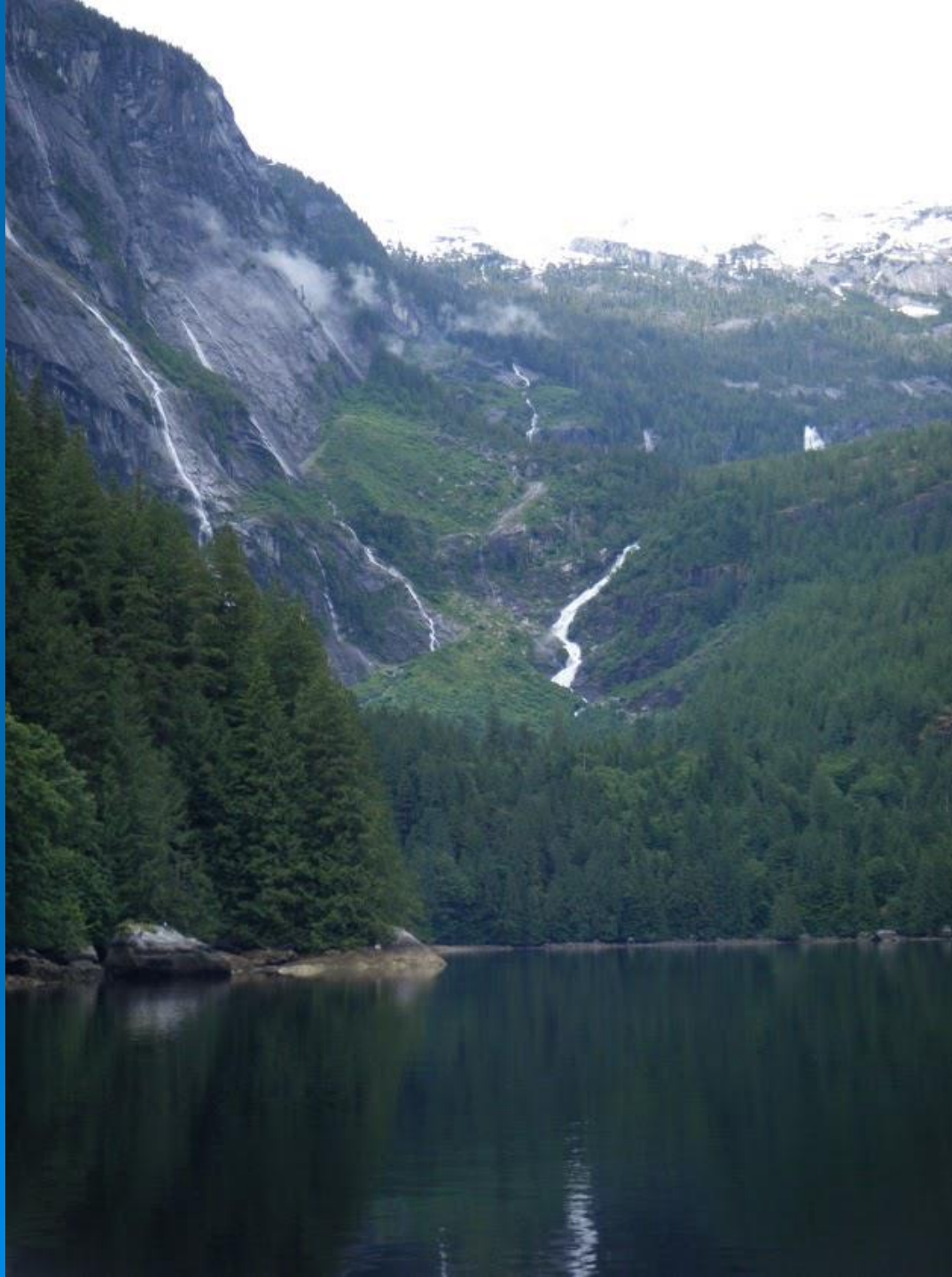
SUNSHINE COAST











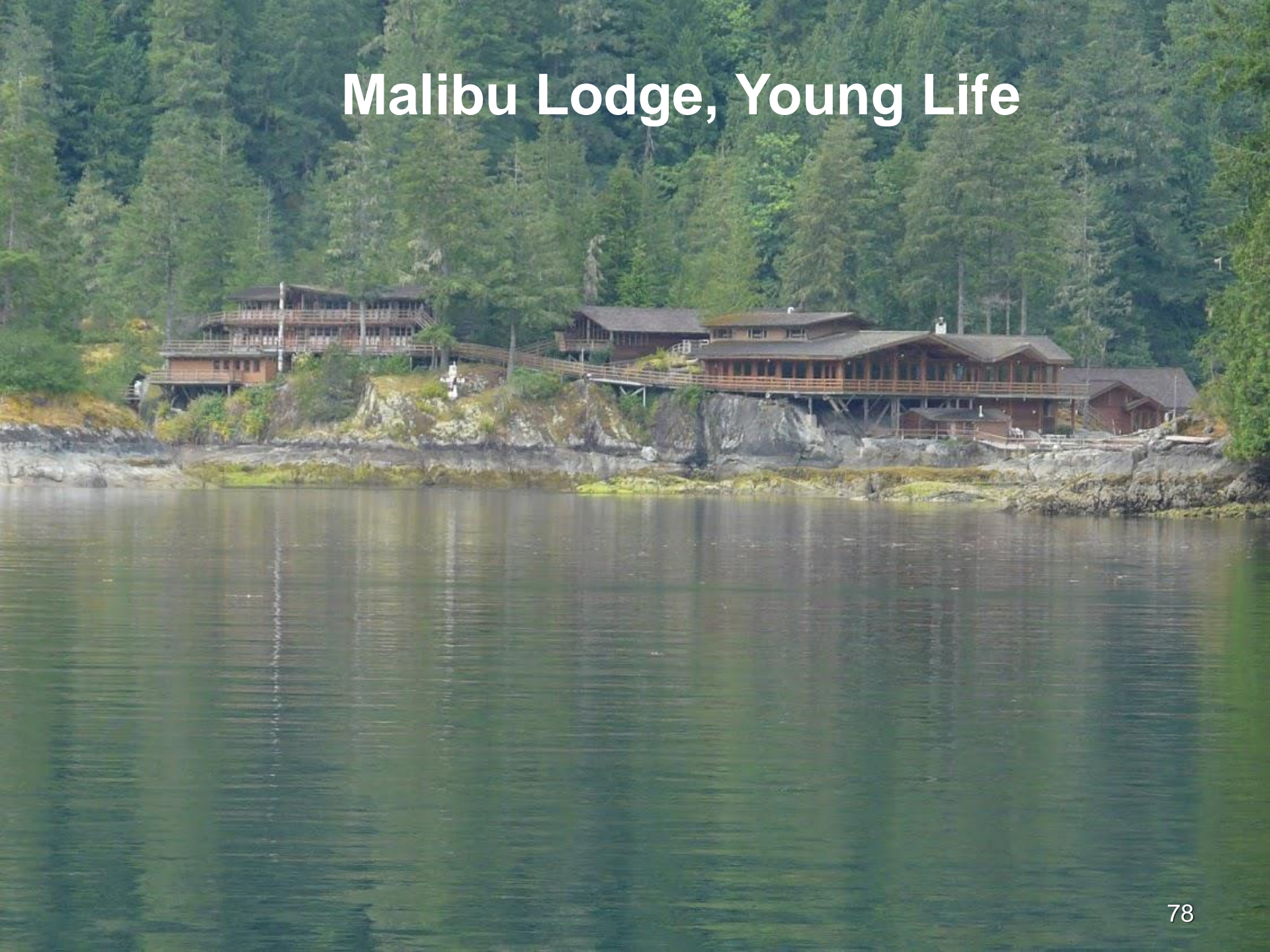


Chatter box falls

A scenic landscape featuring a large waterfall cascading down a rocky cliff on the left. The surrounding area is densely forested with tall evergreen trees. In the foreground, a calm body of water reflects the scene. Several boats, including a large white motorboat and a tall-masted sailboat, are docked along the shoreline on the right. The sky is bright with some light clouds.



Malibu Lodge, Young Life



Malibu Rapids





NO DIVING

6'0"

7'0"

**Skookumchuck rapids up to 30 mph flow
We did in M26X at 10 mph**

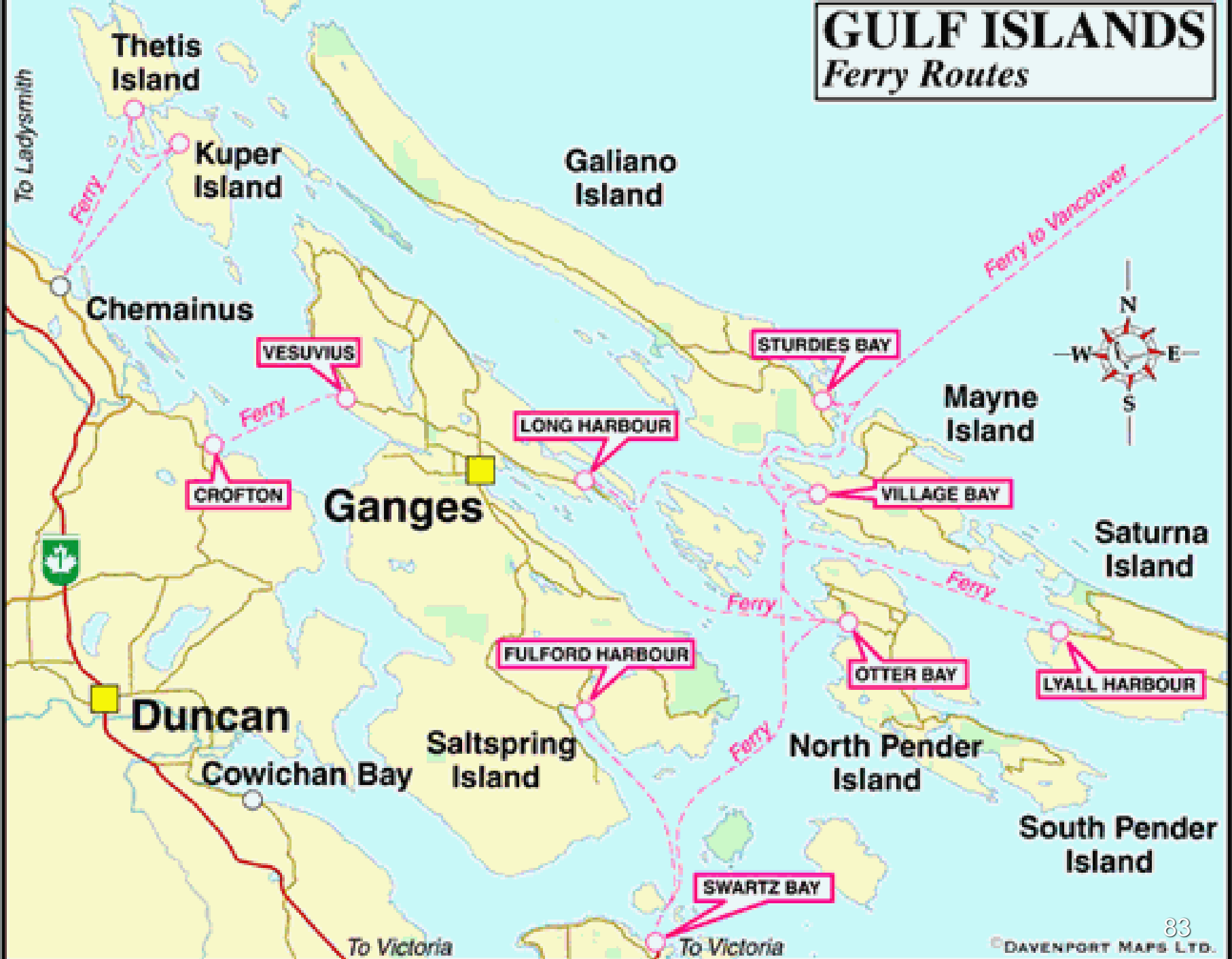


Canadian Gulf Islands just NW of San Juan Islands



GULF ISLANDS

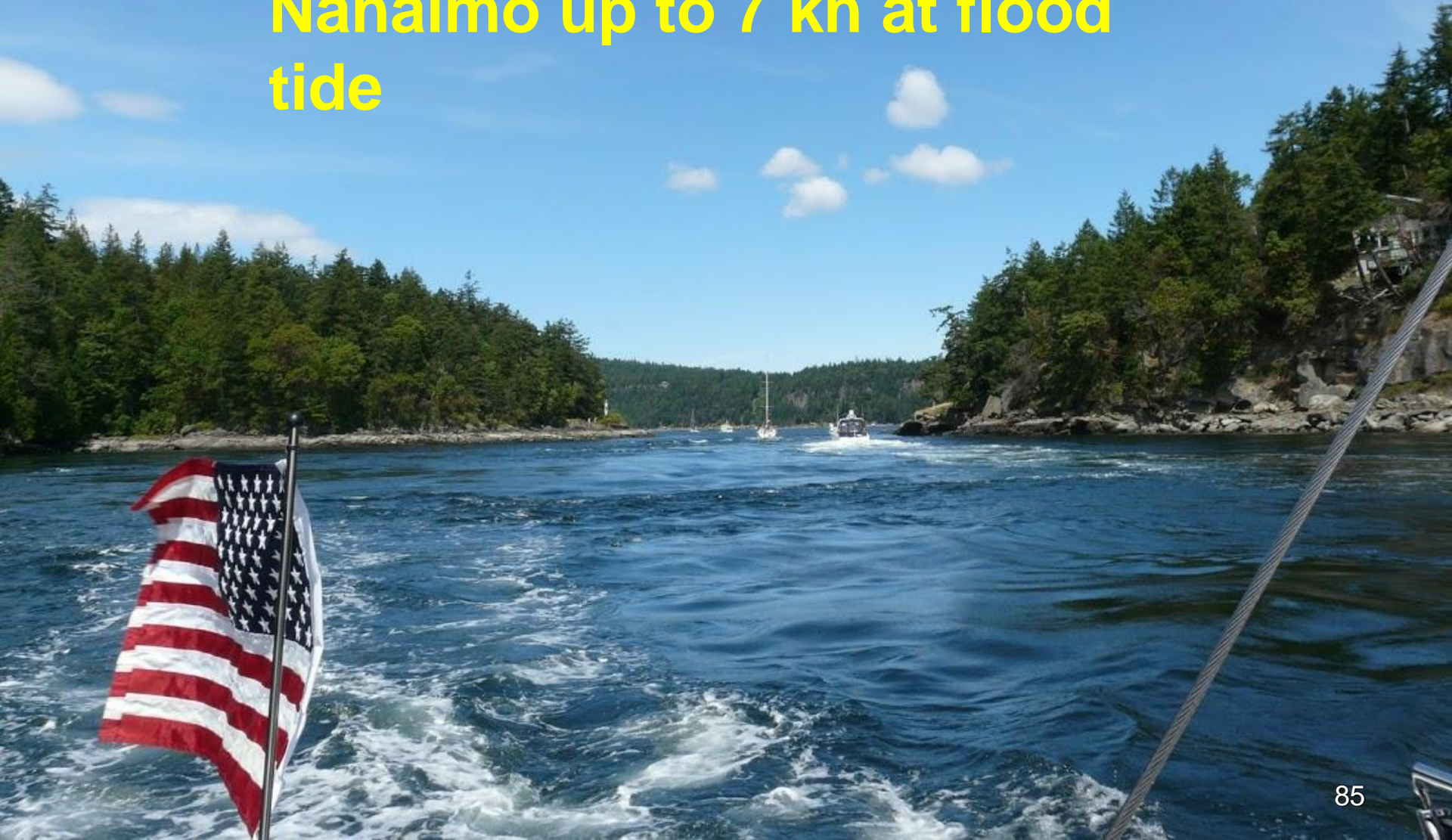
Ferry Routes



Gulf islands BC



Dodd Narrows south of Nanaimo up to 7 kn at flood tide





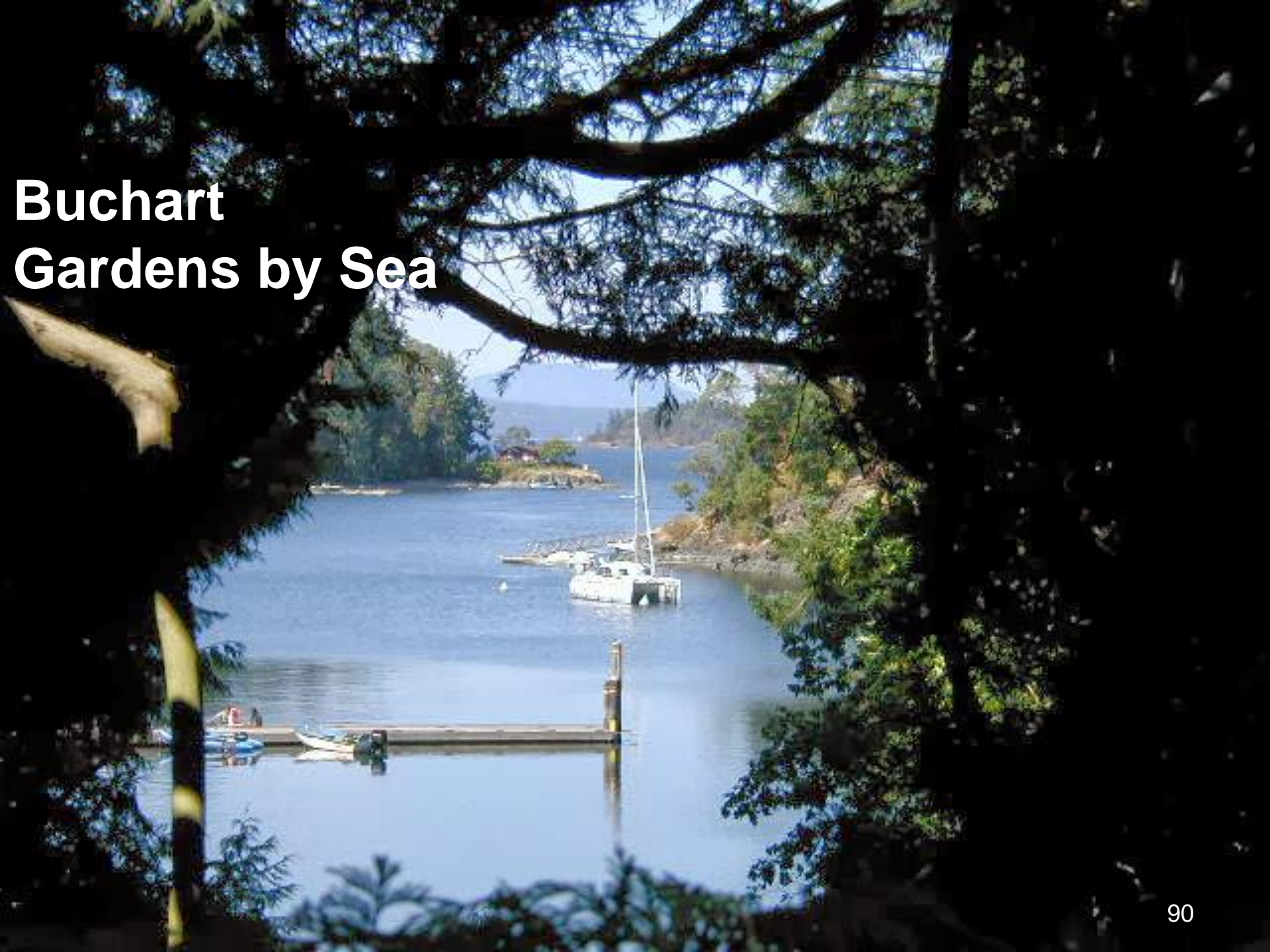
Chemainous, Vancouver Is. So. Of Nanaimo







Buchart Gardens by Sea



Roche Harbor Flag ceremony at dusk



The End, Questions?

WORDBoats.com Sandy Williamson

See Bus. Cards & me at table outside lecture hall after talk. Or North Hall
134 rest of show.

tinyurl.com/wordboats goes to:
www.seattleboatshow.com/seminarsurvey

Loops trip - Surprises - 1

- Half the trip in Canada -- cell phone expense
- Less than half the trip with internet access, blogging was difficult
- How good BoatUS was with the outdrive damage – paid \$7K repair with ease.
- \$150/yr. BoatUS towing paid off
- Comparison between Canada and US canal systems
- Met very few “Loopers”: we started too late and traveled too fast.

Surprises - 2

- Did not need radar for this trip.
- Used mostly marinas to power AC – w/o good generator setup
- Prepped in VA Marina with no security and many immovable boats with owners that frequented there – cheap, social “beach house” community
- 8 ft Dinghy with electric trolling motor was good compromise.
- Only used the folding bikes 1 time on Mackinaw Island. Mostly due to pace of trip.



The End - Links

- Greatloop.com/.org - join to get newsletter
- <http://seathesounds.blogspot.com/>
- boatUS.com Did I plug BoatUS.com?
- Boattest.com for fuel economy tests
- Wordyachts.com & **WORDBoats.com**
- **EcoCruiser.net & Pontoonwest.com**
- Sandy 253-376-8273
- sandy@WORDBoats.com

Boats we've chartered

- Columbia 28